

Surveys

We provide our tools for you to discover historical heritage buried underneath the ground and revive them.
We pursue the easiness of using the tools in our products designs.

Tenbako

Survey

Organizing

Preserving and Storage

Exhibiting

Experiences

Relics Marking Machines

Outsourcing Services

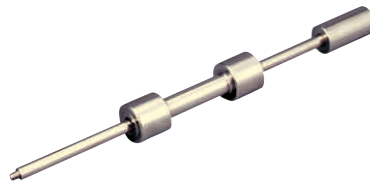
Our Products and Services for Exhibition



Soil Auger

This tool is used to check if there is any substance under the ground at the time of investigation prior to excavation.

| Description | Dimensions (mm) | Material | Delivery Lot Size |
|-------------|----------------------|-----------|-------------------|
| 3m | 3 joints, Handle 16φ | Stainless | 1 |
| 2m | 2 joints, Handle 16φ | | 1 |
| 1m, Wide | Handle 16φ | | 1 |
| 1m, Wide | Handle 13φ | | 1 |



Hammer Head

This tool is used to hammer the Soil Auger down into the ground.

| Description | Weight (kg) | Material | Delivery Lot Size |
|-------------|-------------|-----------|-------------------|
| Hammer Head | 3.5 | Stainless | 1 |



Joren (Scoop with handle)

| Description | Dimensions (mm) | Delivery Lot Size |
|-------------|-----------------|-------------------|
| Joren | 270 x 1200 | 12 |



Tate Joren (Vertical Joren)

This tool is suitable for work on vertical faces.

| Description | Dimensions (mm) | Delivery Lot Size |
|-------------|--------------------|-------------------|
| Tate Joren | L1150 x W285 x H50 | 1 |



Hand Hoe (Teguwa)

| Description | Dimensions (mm) | Delivery Lot Size |
|-------------|-----------------|-------------------|
| Teguwa | 135 x 390 | 1 |



Fork (Kumade)

| Description | Dimensions (mm) | Delivery Lot Size |
|-------------|-----------------|-------------------|
| Kumade | 110 x 390 | 1 |



Triangle Draw Hoe

| Description | Dimensions (mm) | Delivery Lot Size |
|-------------------------|-----------------|-------------------|
| Large Triangle Draw Hoe | 210 x 1200 | 1 |
| Small Triangle Draw Hoe | 140 x 400 | 1 |



Trowel

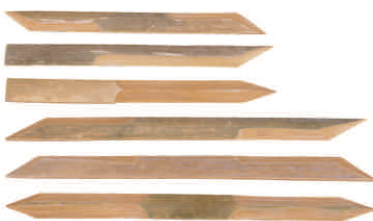
| Description | Dimensions (mm) | Delivery Lot Size |
|--------------|-----------------|-------------------|
| Trowel Large | 270 | 1 |
| Trowel Small | 257 | 1 |



Ladle (Otama)

This ladle is made of stainless steel and robust. It is suitable to dig and scoop fine soil.

| Description | Dimensions (mm) | Material | Delivery Lot Size |
|-------------|-----------------|-----------|-------------------|
| Large Otama | appr.360, φ105 | Stainless | 1 |
| Small Otama | appr.200, φ92 | | 1 |



Pallet Set

| Description | Material | Delivery Lot Size |
|-----------------------|----------|-------------------|
| Pallet Set(6 pallets) | Bamboo | 1 set |



Hand Broom

| Description | Dimensions (mm) | Delivery Lot Size |
|-------------|-----------------|-------------------|
| Hand Broom | 210 | 1 |



Planting Trowel

| Description | Dimensions (mm) | Delivery Lot Size |
|-------------|-----------------|-------------------|
| Large Width | 280 x 68 | 1 |
| Small Width | 280 x 53 | 1 |



■ Bamboo Skewers

| Description | Dimensions (mm) | Material | Delivery Lot Size |
|----------------------------|-----------------|----------|-------------------|
| Bamboo Skewers(90 skewers) | 150 | Bamboo | 1 |



■ TEMI(Winnowing Basket)

| Description | Dimensions (mm) | Delivery Lot Size |
|-------------|-----------------|-------------------|
| Large TEMI | 530 x 540 x 230 | 10 |
| Small TEMI | 420 x 430 x 130 | 10 |



■ Sandbag

| Description | Dimensions (mm) | Delivery Lot Size |
|-----------------------|-----------------|-------------------|
| Sandbag | 470 x 600 | 400 |
| Sandbag made in Japan | 480 x 620 | 400 |



■ Plastic Bag for Buried Artifacts to be put in

| Description | Dimensions (mm)/ W x L x Thickness | Color | Delivery Lot Size |
|-------------|---------------------------------------|-------------|-------------------|
| No.3 | 80 x 150 x 30 μ | Transparent | 400 |
| No.6 | 100 x 210 x 30 μ | | 300 |
| No.11 | 200 x 300 x 50 μ | | 100 |
| No.15 | 300 x 450 x 50 μ | | 100 |
| No.30 | 600 x 900 x 100 μ | | 100 |

*Please ask for a quote for different dimensions.



■ Plastic Bag with zipper

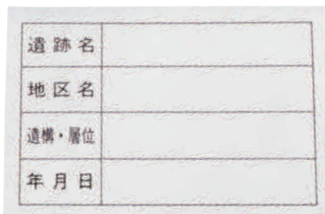
| Description | Dimensions (mm)/ W x L x Thickness | Color | Delivery Lot Size |
|-------------|---------------------------------------|-------------|-------------------|
| B4 | 60 x 85 x 40 μ | Transparent | 300 |
| D4 | 85 x 120 x 40 μ | | 200 |
| E4 | 100 x 140 x 40 μ | | 200 |
| G4 | 140 x 200 x 40 μ | | 100 |

*Please ask for a quote for different dimensions.

■ Plastic Bag with zipper mark

| Description | Dimensions (mm)/ W x L x Thickness | Color | Delivery Lot Size |
|-------------|---------------------------------------|-------------|-------------------|
| B | 60 x 85 x 40 μ | Transparent | 300 |
| E | 100 x 140 x 40 μ | | 200 |
| G | 140 x 200 x 40 μ | | 100 |

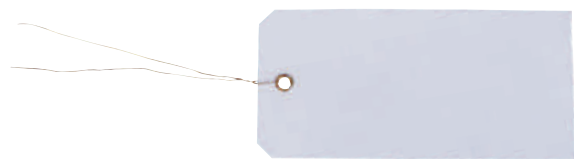
*Please ask for a quote for different dimensions.



■ Ruins' Name Card

This card is made of YUPO paper, which is water and soil dirt free.

| Description | Dimensions (mm) | Material | Delivery Lot Size |
|------------------|-----------------|------------|-------------------|
| Ruins' Name Card | 70 x 100 | YUPO paper | 500 |



■ Synthetic Paper Tag

This tag is made of YUPO paper, which is water and soil dirt free.

| Description | Dimensions (mm) | Material | Delivery Lot Size |
|---------------------------|-----------------|------------|-------------------|
| Large Synthetic Paper Tag | 120 x 60 | YUPO paper | 1,000 |
| Small Synthetic Paper Tag | 80 x 45 | | 1,000 |
| Tiny Synthetic Paper Tag | 60 x 30 | | 1,000 |



Blue Sheet

| Description | Dimensions (m) | Delivery Lot Size |
|------------------|----------------|-------------------|
| Blue Sheet #3000 | 3.6 x 5.4 | 1 |
| | 5.4 x 5.4 | 1 |
| | 5.4 x 7.2 | 1 |
| | 10 x 10 | 1 |
| Blue Sheet #2500 | 3.6 x 5.4 | 1 |
| | 5.4 x 5.4 | 1 |
| | 5.4 x 7.2 | 1 |
| | 10 x 10 | 1 |

* Shipping cost is separately charged.



IZUMI Sun Shade Wear

In the field work under the blazing sun where staff might expose its back directly to the sunshine he or she eventually suffers from getting exhausted. Being made of the natural material of reed, IZUMI Sun Shade Wear breathes well and releases heat very efficiently. It protects workers from directly receiving the sunshine heat, while radiating their body heat efficiently so that they can continue their field work without worrying being stuffy. Please cut it by scissors to make it fit your body.

| Description | Dimensions (mm) | Weight (g) | Material | Delivery Lot Size |
|-------------|-----------------|------------|----------|-------------------|
| IZUMI | 800 x 630 | 900 | Reed | 10 |

SUZUMI (Tent for buried artifacts)

It is a light weight and compactly designed tent for the scene. It breathes well and creates great working environments under the blazing sun.



| Description | Dimensions (m) | Shield Rate | Total Weight (kg) | Delivery Lot Size |
|--------------|----------------|-------------|-------------------|-------------------|
| SUZUMI Large | 10 x 10 x 2.7 | 80% | appr.39 | 1 |
| SUZUMI Small | 6 x 6 x 2.7 | | appr.36 | 1 |

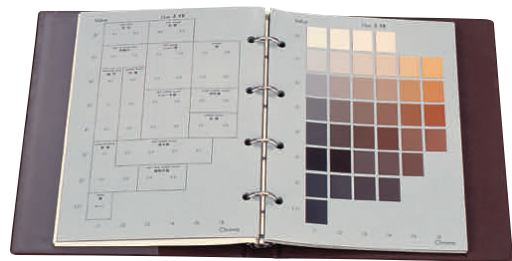
Assembly Items: Sheet (10x10m) or (6x6m) 1 sheet, made of polyethylene
 Triangle Pole (triangle portion: 28φx1.4m) 4 poles, made of steel
 Triangle Pole (triangle portion: 38φx1.5m) 8 poles, made of steel
 Center Pole (38φx1.4m) 2 poles, made of steel
 Sheet Support (400φx thickness 9mm) 1 sheet, made of PP
 Stake (13φx 50cm) 4 stakes, made of steel
 Rope (30 m)



Thermo Mat

This mat prevents the site from frost and frost columns. It enables to protect remains and to make an immediate start of excavation.

| Description | Dimensions | Delivery Lot Size |
|-------------|---------------------|-------------------|
| No.1 | 1m width x 30m roll | 2 |
| No.2 | 2m width x 4m sheet | 5 |
| No.3 | 5m width x 4m sheet | 3 |



Soil Color Chart

| Description | Delivery Lot Size |
|------------------|-------------------|
| Soil Color Chart | 1 |

Soil Color Surveyor

This device measures the color of soil layer and of earthenware accurately in the Muncell display method by one touch operation. This solves the problem of the difference of judgment in case of visual observation. This is small enough to be portable.



Options

| Description | Delivery Lot Size |
|---------------------------|-------------------|
| Soft Case (CR-A68) | 1 |
| Protection Cover (CR-A80) | 1 |
| AC Adapter (AC-A308) | 1 |

| Description | Delivery Lot Size |
|---------------------------|-------------------|
| Soil Color Surveyor SCR-1 | 1 |

One full set of Soil Color Reader consists of the reader SCR-1 and the following items:
 Soft Case Gray (CR-A68) 1 ea
 Wrist Strap (CR-A73) 1 ea
 White Color Corrector (CR-A74) 1 plate
 Protection Grass Cap (CR-A79) 1 ea
 Protection Cover Transparent (CR-A80) 2 sheets
 Size AA Battery 4 ea



Soil Color Surveyor Printer

This printer prints out the data measured by the Soil Color Reader.

| Description | Delivery Lot Size |
|----------------------------------|-------------------|
| Soil Color Surveyor Printer DP-S | 1 |

One full set of this printer consists of the printer body and the following items:
 AC Adapter (AC-A308)
 Special Cable
 Thermal Paper



Leveling String Cross Pins

| Description | Dimensions (mm) | Pin Head (φ) | Delivery Lot Size |
|-------------|-----------------|--------------|-------------------|
| Large | 9φ x 100 | 20 | 10pins pack x 5 |
| Medium | 7φ x 75 | 15 | 20pins pack x 5 |
| Small | 4φ x 40 | 9 | 50pins pack x 5 |



Leveling String Cross Pin Plates

| Description | Diameter (mm) | Color | Delivery Lot Size |
|-------------|---------------|-------------|--------------------|
| Large | 47φ | Red/Yellow/ | 5plates pack x 1 |
| Small | 26φ | Blue | 100plates pack x 1 |



Pin Pole

| Description | Dimensions (mm) | Delivery Lot Size |
|-------------|-----------------|-------------------|
| Large | 8 x 1000 | 10 |
| Small | 6 x 500 | 10 |



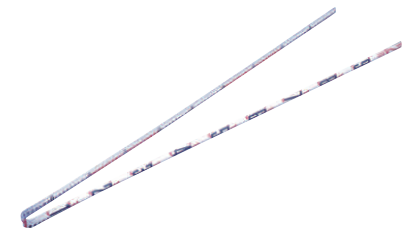
Downswing Weight

| Description | Dimensions (mm) | Weight (g) | Delivery Lot Size |
|------------------|-----------------|------------|-------------------|
| Downswing Weight | 32 x 121 | 200 | 1set |



Hand Measure

| Description | Length (m) | Material | Delivery Lot Size |
|--------------|------------|-------------|-------------------|
| Hand Measure | 50 | Grass Fiber | 1 |



Bendable Scale

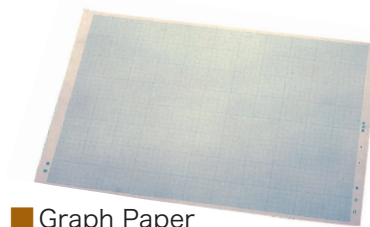
This scale can be bent at any part of it. It is light and easy to carry. It does not break no matter how frequently it is bent at a same point. Since it has a hanging point, it can be hung over a leveling string to measure a section of the stratum.

| Description | Dimensions | Weight (g) | Delivery Lot Size |
|----------------|--------------------|------------|-------------------|
| Bendable Scale | 2m long, 1cm scale | 200 | 1 |



Survey Notebook

| Description | Dimensions (mm) | Volume | Delivery Lot Size |
|-------------------|-----------------|--------------------------------|-------------------|
| Sketch Book se-Y3 | 160 x 91 | 40sheets of high quality paper | 15set |

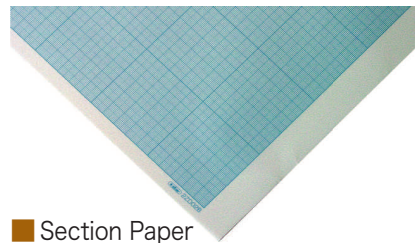


Graph Paper

You can choose conventional Kent paper or YUPO paper, which is water and mud dirt proof.

| Description | Size | Delivery Lot Size |
|-------------|------|-------------------|
| Kent Paper | A2 | 100 |
| YUPO Paper | A2 | 100 |

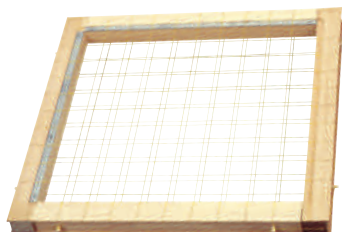
*The characters on the above picture are not normally printed.
 *Please ask for a quote to print your name on the paper.
 *Kent Paper uses the Drop-out Ink.
 *Please ask for a quote for a different paper.



Section Paper

This paper is a PET film (sand mat on the both sides) based high precision film grids. It is easy to write on this film, while using an eraser does not affect the printed scale. It is blue color paper with 1mm square grid.

| Description | Size | Color | Graph Size (mm) | Delivery Lot Size |
|---------------|------|-------|-----------------|--------------------|
| Section Paper | A2 | Blue | 400 x 550 | 1 book (100sheets) |



Frame Scale with Grid

| Description | Dimensions (mm) | Delivery Lot Size |
|-------------|-----------------|-------------------|
| No.1000 | 1000 x 1000 | 1 |
| No.500 | 1000 x 500 | 1 |

*A scale is provided only for No. 500.